



The new STX A6-4 provides the best value in SAS and SATA protocol analysis!

LeCroy's new STX A6-4 Protocol Analyzer provides an excellent new option for customers looking for a full-featured protocol analyzer at the lowest available cost. Built on the industry-leading STX Series of SAS and SATA protocol analyzers, the STX A6-4 has been engineered to offer high-end capability at significantly reduced cost, to meet the rapidly expanding needs of SAS and SATA developers.

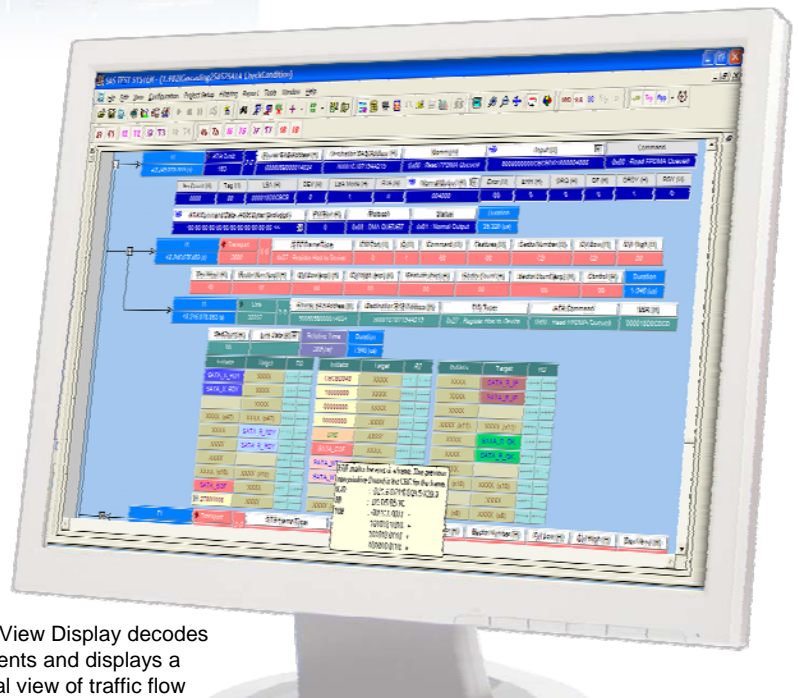
The STX A6-4 offers a complete suite of protocol analysis features that includes support for all the latest standards, a wide range of data displays, and complete performance monitoring and error reporting capability. Never before has this much capability been available at such economical pricing.

The STX A6-4 supports SAS and SATA at 1.5 Gb/s, 3 Gb/s and 6 Gb/s, and includes trace memory options of 2, 4 and 8GB. The system supports 4 ports (mini-SAS initiator and target), and by connecting additional systems the STX A6-4 will support cascading (simultaneous data capture with synchronized time stamps) across up to 32 ports. Additional features include a multi-state triggering system supported by a simple GUI setup, automatic detection of common protocol errors, the ability to filter traffic either during recording or prior to display, support for spread spectrum clocking, waveform display of OOB, and performance analysis of the data links.



### KEY FEATURES

Data Rates	1.5, 3 and 6 Gb/s
Trace Memory	2, 4, or 8 GB
Ports Supported	Up to 4 Ports
Bus Connectors	4-wide miniSAS
Cascading	Up to 32 ports
Trigger	Advanced state machine triggering
Filtering	Pre-recording & post-recording
Spread Spectrum Clocking	Yes
Performance Analysis	Yes
Simulated Waveform Display of OOB	Yes
Host PC Connection	USB 2.0 or 10/100 Ethernet



The Packet View Display decodes captured events and displays a chronological view of traffic flow

## Multiple Data Displays Fit Every Need

The STX A6-4 provides a wealth of different ways to display captured bus traffic, from low-level views that focus on bit-level traffic to high-level views focused on major transactions. Higher-level views provide the ability to “drill down” through lower layers to identify the underlying sources of problems.

Different data views include capabilities such as the Packet View Display, Spread Sheet View, Text View and Combined View.

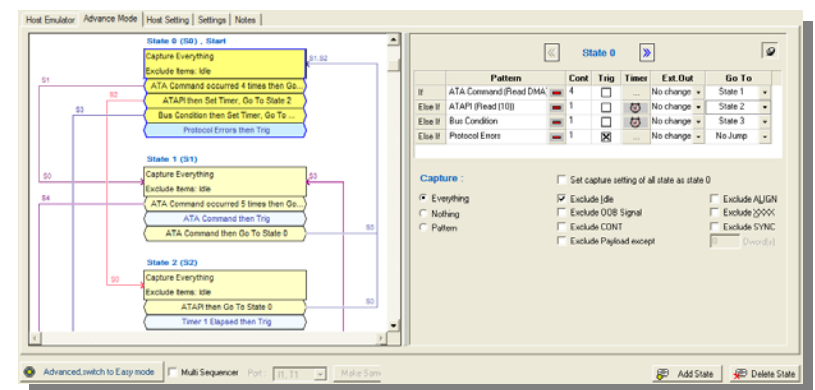
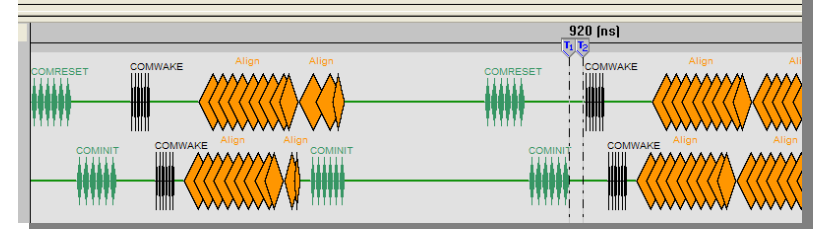
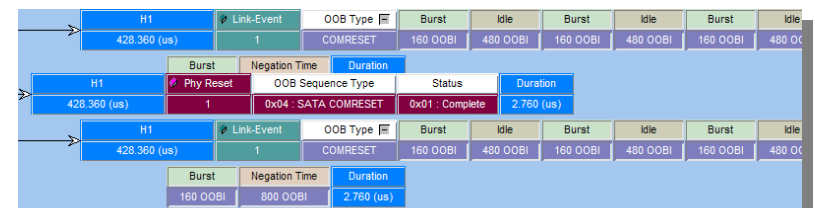
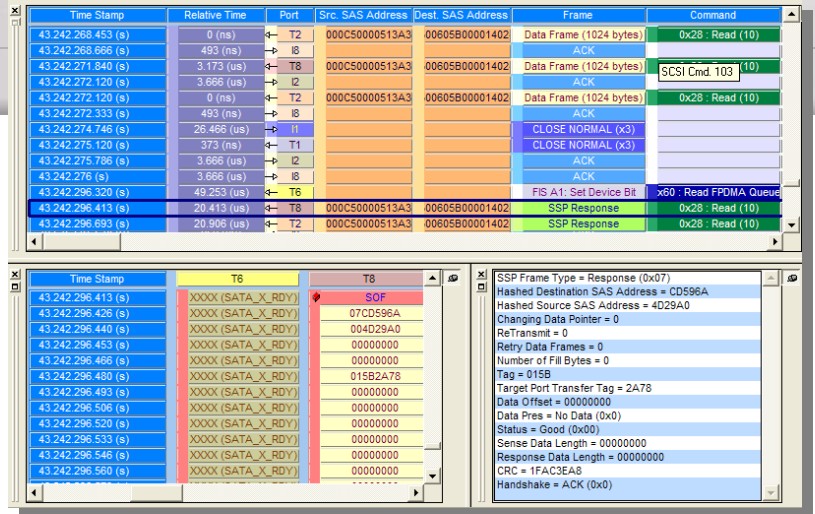
The OOB Waveform Display displays the captured OOB sequence in a graphical format which represents the time relationship between the various OOB events. The user can easily view the burst and idle times for each event, and can select cursors to obtain delta times between events.

## Customized Filtering Provides Focus on Problems

The STX A6-4 features several customizable options for pre-filtering to capture only items of interest. The filtering capabilities can be accessed either through “Easy” mode, which features simple “click to add” functionality, or “Advanced” mode which features a 24-level state sequencer with the ability to change pre-filters for each state.

## Advanced Multi-state Triggering

The STX A6-4 supports both simple and advanced triggers, which provide a graphical display to assist design and understanding of the trigger logic. Advanced features include 24-level state sequencer, IF and ELSE-IF conditions, multiple concurrently-armed triggers, counters, local and global timers, GO-TO branching, and an intuitive graphical display of the sequencer.



## ORDERING INFORMATION

SA4-A6-2-2-A	STX A6-4 SAS & SATA 6G 1-port Analyzer System (2 GB Trace Memory)
SA4-A6-2-4-A	STX A6-4 SAS & SATA 6G 1-port Analyzer System (4 GB Trace Memory)
SA4-A6-4-2-A	STX A6-4 SAS & SATA 6G 2-port Analyzer System (2 GB Trace Memory)
SA4-A6-4-4-A	STX A6-4 SAS & SATA 6G 2-port Analyzer System (4 GB Trace Memory)
SA4-A6-8-4-A	STX A6-4 SAS & SATA 6G 4-port Analyzer System (4 GB Trace Memory)
SA4-A6-8-8-A	STX A6-4 SAS & SATA 6G 4-port Analyzer System (8 GB Trace Memory)

